

SDI

MARCH 2024

AUSTRALIA

50 YEARS
DENTISTRY
SCIENCE

CREATED BY SDI

POLA
ADVANCED TOOTH
WHITENING SYSTEM

Award winning tooth whitening

Minimal to no sensitivity • Greatest patient comfort • Contains Potassium Nitrate and Fluoride • Starting from just 10 minutes a day

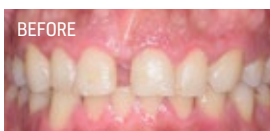
Boost patient satisfaction with our powerful and effective advanced tooth whitening system

POLA NIGHT 10%



DR. ALI SALEHI
DDS - FRANCE/USA

POLA LIGHT 6%



DR. MOHAMED
ABDULMONEM
ABDULSALAM, EGYPT



POLA DAY

- Available in **6% 7.5% and 9.5% hydrogen peroxide** applications
- From 30 minutes once a day



POLA DAY CP

- Available in **35% carbamide peroxide** applications
- From just 15 minutes, once or twice per day



POLA NIGHT

- Available in **10% 16% 18% and 22% carbamide peroxide** applications
- From 45 minutes once a day

POLA 4 X 1.3G MINI KIT	MRP \$41.47
POLA 10 X 1.3G SYRINGE KIT	MRP \$101.57
POLA 50 X 3G DISPENSER PACK	MRP \$513.00
SOOTHE MINI KIT	MRP \$38.75
SOOTHE BULK KIT	MRP \$446.06
POLA FOR ALIGNERS 4 X 3G	MRP \$87.10

POLA LIGHT

- Available in **6% or 9.5% hydrogen peroxide**
- No custom trays required

DENTIST PRICE MRP \$109.15
RECOMMENDED PATIENT PRICE \$199.00



POLA FOR ALIGNERS

- Available in **10% carbamide peroxide**
- High viscosity gel ensures it can be easily and securely placed into the aligner tray, staying in place



POLA LUMINATE

- Available in **6% hydrogen peroxide**, low viscosity fast drying gel

DENTIST PRICE MRP \$24.82
RECOMMENDED PATIENT PRICE \$75.00



SOOTHE

- Available in **6% potassium nitrate and 0.1% fluoride**
- Instant relief - use before or after whitening treatment



TAKE-HOME WHITENING

5+1^x
BUY 5, GET 1 FREE

10+3^x
BUY 10, GET 3 FREE

RIVA STAR AQUA

A NEXT GENERATION WATER BASED SOLUTION TO ARREST CARIES

CASE STUDY:

The presented case involves a 19 year old male who attended the practice for treatment. He had recently finished high school and began a part time job. Finances were an issue. However, he was motivated to improve his oral health and would like to maintain his teeth for the long term.

On examination there were several teeth with primary and secondary caries. 16 had an O restoration which was failing. Leaking margins and secondary caries were present.

Radiographs, pulp sensibility testing with cold, percussion and periodontal assessment were carried out. Tooth 16 was asymptomatic to all tests. Periodontal health was deemed to be good. Some gingival inflammation was noted.

A significant amount of time was spent discussing general prevention strategies through daily F- exposure, brushing and flossing techniques. Further reinforced with education on caries and periodontal disease processes.

16 was treatment planned and patient was offered a number of restorative options. Patient chose to manage caries and have restoration.

Treatment was carried out on 16 under local anaesthetic and rubber dam. Upon removal of previously placed restoration extent of secondary caries was greater than radiologically expected. Explained to patient the impact of this on the tooth and prognosis for restoration. Patient was provided with option of removal of as much caries as possible and application of 2 step Riva Star Aqua (Silver Fluoride and Potassium Iodide) as part of caries management process.

Patient was provided risks and benefits. Main benefit was the potential for arresting caries into the long term and preserving maximum tooth structure. 16 is a critical tooth for masticatory

function, occlusal scheme management and aesthetics. Main risks discussed were staining of tooth and possibility caries may not be completely arrested. Also explained initially there would be a temporary restoration overlying treated caries.

Patient was provided a consent form, discussed in detail any concerns. Patient noted the ability to arrest caries and preserve tooth was the main driver for going through with treatment. In particular due to his young age and needing to utilise this tooth for a significant amount of time into the future.

16 O caries was removed using slow speed round burs, Riva Star Aqua Step 1 (Silver Fluoride) applied (**Image 2**), rubbed in with microbrush until colour change noted on all aspects of dentine (**Image 3**), Riva Star Step 2 (Potassium Iodide) followed and application time was based on the white exudate (**Image 4**) being removed completely (approximately 2 minutes), colour change was noted after this step, RIVA SC was placed overlying the cavity. (**Image 5**)

The patient returned after 3 weeks for a review. Pulp sensibility testing with cold, percussion and periodontal assessment were carried out. Tooth 16 was asymptomatic to all tests. Periodontal health was deemed to be good. Gingival inflammation had also resolved. There was very minimal staining noted. The patient provided he was not aware of any major aesthetic changes to the tooth. Patient was quite happy with the treatment and pleased the tooth did not have any caries remaining in tooth.

Patient was again reviewed a week later and nil symptoms were noted. Patient remained pleased with treatment.

CONCLUSION:

Riva Star Aqua is an excellent addition to a clinician's tool kit. With appropriate training and education, it is a valuable option for preserving teeth in dentition for longer. Patients appreciate the opportunity of saving their teeth and having more time to work towards improved oral health.



ABOUT THE AUTHOR:



DR. VAIBHAV GARG

Dr. Garg has worked in Oral Health and Public Health since 2012. His career working in low-resource, rural, and remote settings in Australia and overseas has provided insight into the value of innovations for communities most in need of dental care.



Image 1 Tooth prior application of Riva Star Aqua Step 1



Image 2 Application of Riva Star Aqua Step 1 on page 2



Image 3 Post application of Riva Star Aqua Step 1 - Colour change is obvious with caries present.

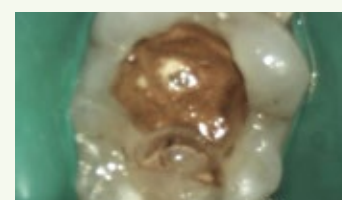


Image 4 Riva Star Step 2 applied. White precipitate has turned clear.



Image 5 Application of Riva GIC



Image 5 Application of Riva GIC



Image 6 Completed restoration



Image 6 Completed restoration

BPA &
HEMA
FREE

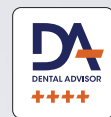


STELA

THE FUTURE OF COMPOSITES

50 years of dental material experience has engineered a two step restorative that is stronger, gap free, easier to place and perfectly cures every time.

- ✓ Unlimited depth cure with self-curing
- ✓ Gap-free interface for longevity without sensitivity
- ✓ Two steps: with no etching or light curing
- ✓ Extremely high flexural and compressive strength
- ✓ Available in capsule or automix syringe



PREPARATION IN JUST 15 SECONDS

STELA PRIMER



Prime cavity
and margins



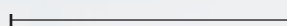
Wait 5 sec



Dry for
2-3 seconds

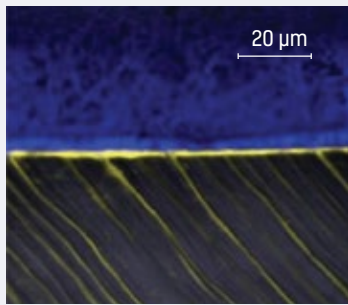
Steps	Time
2	15 sec

Stela: straight to placement
in 15 seconds



PLACE STELA
COMPOSITE

GAP FREE INTERFACE



STELA GAP FREE BONDING INTERFACE

A confocal micrograph of a gap-free Stela-dentine interface. Note the penetration depth of Stela Primer [yellow] within the dentine tubules.

Source: Dr Salvatore Sauro

UNLIMITED BULK FILL WITH CERTAINTY



Composite restorations fail for a variety of reasons, including uncured material in deep areas, which may cause sensitivity. Stela will self-cure at all depths, thereby eliminating any curing uncertainty.



» The application of Stela is **very easy** and after 4 minutes the restoration had the same shade as the tooth. **Great polishability!**
Perfect product! «

PROF DR ROCIO LAZO

Professor of the Specialization Program in Paediatric Dentistry at the Scientific University of the South - Lima - Peru
Co-author of three books on Paediatric Dentistry and several research papers



Cavity prepared and ready to be isolated with rubber dam



Final aspect after finishing and polishing



» I used Stela with different protocols, including directly, without pulp protection and it **did not cause sensitivity**. Thank you, SDI, for sharing these wonderful developments in our profession! «

PROF DR GONZALO ARANA GORDILO

Professor in multiple Colombian universities
International Lecturer in Biomaterials and Dental Aesthetics



Cavity prepared and ready to be isolated with rubber dam



Final aspect after finishing and polishing

MULTI-YEAR RESEARCH PARTNERSHIP



SDF RIVA STAR AQUA

WHY TRUST RIVA STAR RANGE?



70% + CARIES ARREST



A study confirms a 70 - 75% caries arrest rate for Riva Star & Riva Star Aqua.*

88% DROP IN ANESTHESIA



Riva Star has been shown to drastically reduce the need for Dental General Anaesthesia.**

CLINICALLY PROVEN



Riva Star and Riva Star Aqua have successfully featured in clinical studies across the world.

REMOVE STAINING



Riva Star's innovative system significantly reduces staining.

QUICK FOR DIFFICULT PATIENTS



Very easy to administer. Riva Star range requires only a few drops.

WHO RECOMMENDS



World Health Organisation recommends SDF be added to essential medicine list for preventing and treating caries.†

NO TISSUE BURN



Riva Star Aqua does not burn tissue, and has only a mild taste. This makes application faster and easier.

APPROVED WORLDWIDE



The Riva Star systems are approved globally across 6 continents.



\$120.00 PER BOTTLE KIT

RIVA STAR AQUA BOTTLE KIT MRP \$158.79

* Turton B, Horn R, Durward C. Caries arrest and lesion appearance using two different silver fluoride therapies on primary teeth with and without potassium iodide: 12 month results. Clin Exp Dent res 2020;1-11.

** Rana Yawary, BDS, DClinDent (Paed), MRACDS, Shalika Hegde, BDS, MPH, MHP Silver Diamine Fluoride Protocol for Reducing Preventable Dental Hospitalisations in Victorian Children.

† September 2021 update of the WHO model lists of essential medicines.

COMPOSITES

LUNA 2

Luna 2 is the next generation Luna universal composite. Luna 2 has an improved unique blend of fillers that were researched and developed at SDI to deliver enhanced handling, very high radiopacity and reliable mechanical properties. Luna 2 is BPA free for health-conscious patients. Luna 2 makes placing a composite easier than ever.

LUNA 2 4g SYRINGE	MRP \$106.25
LUNA 2 20 X 0.25g COMPLETS	MRP \$137.96
LUNA 2 INTRO KIT	MRP \$516.86



» Handling is fantastic - much improved. It is SDI's best handling composite yet. «

🇦🇺 DR MICHAEL CHAN - AUSTRALIA



Images courtesy of Dr Michael Chan

VALUE
\$155.19*

BUY 3
LUNA 2 REFILLS
**GET BONUS
ZIPBOND REFILL**

ZIPBOND BOTTLE REFILL
1 X ZIPBOND UNIVERSAL 5mL BOTTLE



CEMENTS

RIVA CEM AUTOMIX

RESIN MODIFIED GLASS IONOMER LUTING CEMENT

SUPERIOR BOND, HIGH STRENGTH AND LESS WASTE

Riva Cem Automix is a self-curing, radiopaque, fluoride releasing paste/paste resin modified glass-ionomer luting cement. It is indicated for the permanent cementation of metal and ceramic restorations. The automix tip attachment offers convenience over traditional hand mixed cement systems.

RIVA CEM AUTOMIX
SYRINGE REFILL 2 x 4g
RIVA CEM MIXING TIPS 50PK

MRP \$114.35
MRP \$75.23

2+1*

BUY 2, GET 1 FREE



SUPERIOR BOND
STRENGTH



LIGHT TACK CURE
FOR EASY REMOVAL
OF EXCESS CEMENT



SUSTAINED
FLUORIDE RELEASE



BPA
FREE

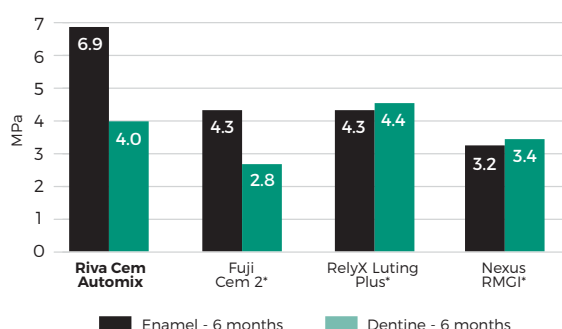


HIGH STRENGTH AND LESS WASTE

Riva Cem Automix shows excellent bond strength to enamel and dentine in an external study conducted over a 6 month period. Riva Cem Automix offers more tips than any other leading cement. Each supplied tip has less waste than other cements, providing you with more material for more patients.

Study: In vitro properties of different resin-modified glass-ionomer cements Prof. Dr. Alessandro Loguercio and Alessandra Reis (Brazil)

Enamel & dentine - bond strength after 6 months



*Not a registered trademark of SDI.



YOUR
SMILE.
OUR
VISION.

Call 1800 337 003
fax 1800 005 602
info@sdi.com.au
www.sdi.com.au
www.polawhite.com.au



New South Wales
Hany Gobran 0418 210 341
Elli Mouhtouris 0400 849 017
Allison Ohlback 0400 305 512

Western Australia
Toni Doherty 0448 086 925

South Australia/Northern Territory
Andriana Spithas 0417 080 771

Victoria
Jo Coyle 0419 313 765
Snezana Josifoski 0418 567 758
Shelby MacDonald 0408 174 626

Tasmania
Snezana Josifoski 0418 567 758

Queensland
Natalie Johnson 0409 807 290
Dora Zanin 0428 910 805

*Offers are valid 1st March - 31st March 2024. Offers cannot be combined. All prices include GST. All claims for free goods must be made within 30 days from the end of promotion date. Free goods will be of equal or lesser value. The above-mentioned offers are not applicable on corporate, government accounts or those customers who have received discounted pricing. Offers are valid in Australia only.